



**LINN**

## **Installing Media Streamer on a Nokia N800/N810**

Rev 1.5

13 June 2008

### **Contents**

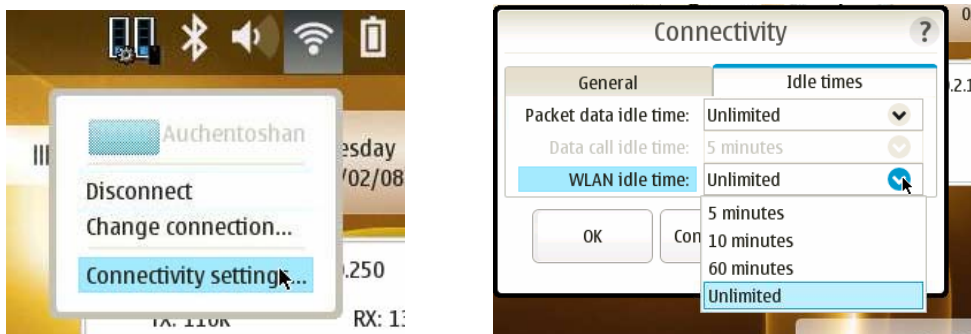
Installation of the Media Streamer software (supplied by Nokia) .....	2
Changing the Nokia N800/N810 network settings.....	2
Playing media from a UPnP AV media server using Media Streamer .....	3
Volume control of a Linn pre-amplifier.....	5
Troubleshooting.....	7
Q. The Nokia N800/N810 cannot see the Klimax DS in its playback device box .....	7
Q. The Linn DS will only play one track from the Nokia playlist.....	7
Q. I cannot see the playlist that I have put on the Linn DS using the Linn GUI software running on the Nokia.....	7
Q. The playlist I have put on the Linn DS using the Linn GUI software has been wiped out .....	7
Q. The Nokia cannot see my NAS or Linn DS.....	7
Q. I've upgraded the firmware and software on my DS system and now the 'next' and 'previous' keys don't work on my N800 .....	8

## Installation of the Media Streamer software (supplied by Nokia)

On the Nokia N800/N810...

1. Select "Tools" > "Application manager"
2. Tap on "Browse Installable Applications" and then on "All" button
3. Find "Media Streamer" in the list, select it and tap on "Install" button in the bottom.

## Changing the Nokia N800/N810 network settings



In Nokia OS2008,

1. Select the Network icon in the top right menu bar, next to the battery.
2. Select "Connectivity Setting"
3. Click on the "Idle times tab" and
4. Change the WLAN IDLE time to "Unlimited" and OK.

In Nokia OS2007,

1. Select "Settings" > "Control Panel" > "Connectivity"
2. Click on the "Idle times tab" and
3. Change the WLAN IDLE time to "Unlimited" and OK.

The network is now set to be on permanently and can only be shut off via a flat battery or physically switching the Nokia off.

Notes: It is the Media Streamer software that holds the playlist on the Nokia, not the Linn DS player. When the track is almost finished, the Linn DS broadcasts "Almost finished. What do I do next?" On this request, the Nokia Media Streamer (or any other UPnP controller) will send the Linn DS player the information on the next track.

## Playing media from a UPnP AV media server using Media Streamer

The media servers are normally located in the Extras menu, although a different folder could have been specified during installation.

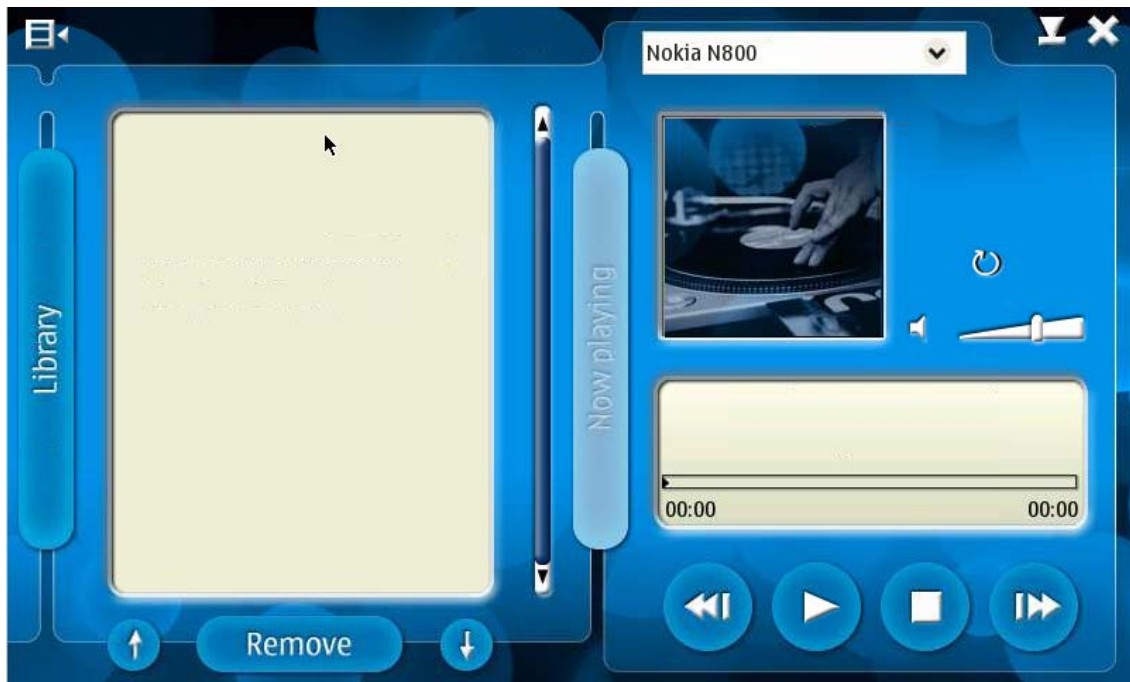


The screen shows you all the NAS devices running UPnP media server software, in the left hand panel.

Do not expect the media servers to be shown immediately on start-up. The Media Streamer will broadcast "Who is there?" on the network and wait for responses.

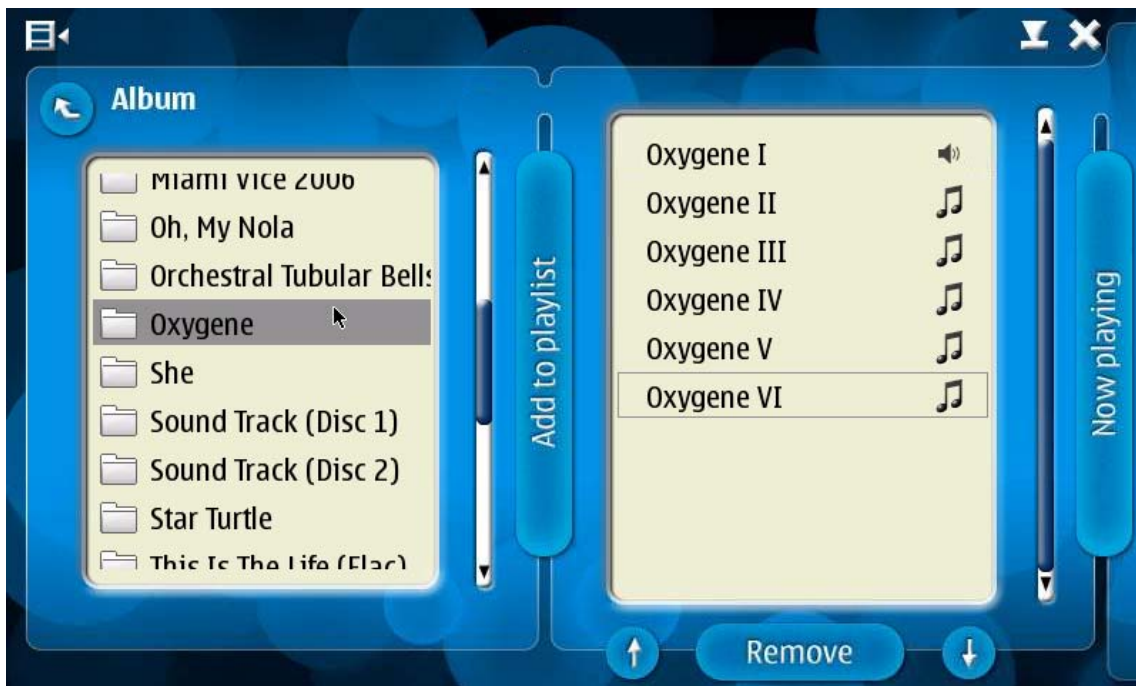
If the software has been running for a little while and you cannot see the device you are looking for, press the icon on the top left and select "tool" > "Refresh devices". This will get the Media Streamer software to rebroadcast a request to the media servers.

Click on the “Now playing” divider and you will see the media renderer (the music player). By default “Nokia N800” is shown in the drop down list in the top right.

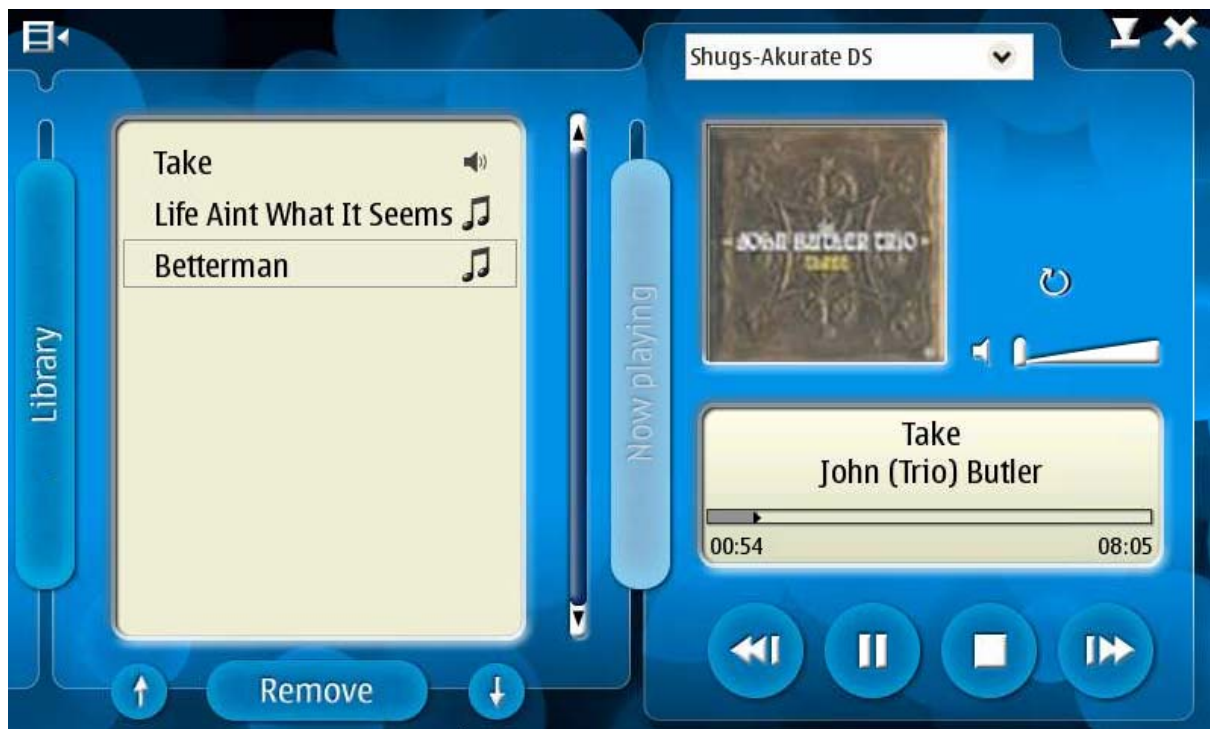


Click the drop down key and select the Linn DS product you wish to control.

Click on the “Now playing” divider. You can now select your media server, navigate through the folders, and select the music you want to hear by pressing the “Add to playlist” divider.



Double-click the first track to start playback.



The Media Streamer can show the cover art of the track playing. If you are using TwonkyMedia software on your NAS device, cover art is supported on V4.4.4 and above. At the time of writing (Jan 2008), TwonkyMedia V4.4.4 is still in the test stage and is only available for PC, Linux and MAC computers.

Notes: UPnP control devices hold the playlist and send the next track information to the Linn DS player. Linn GUI software downloads the **entire** playlist (up to 1,000 tracks) to the Linn DS player.

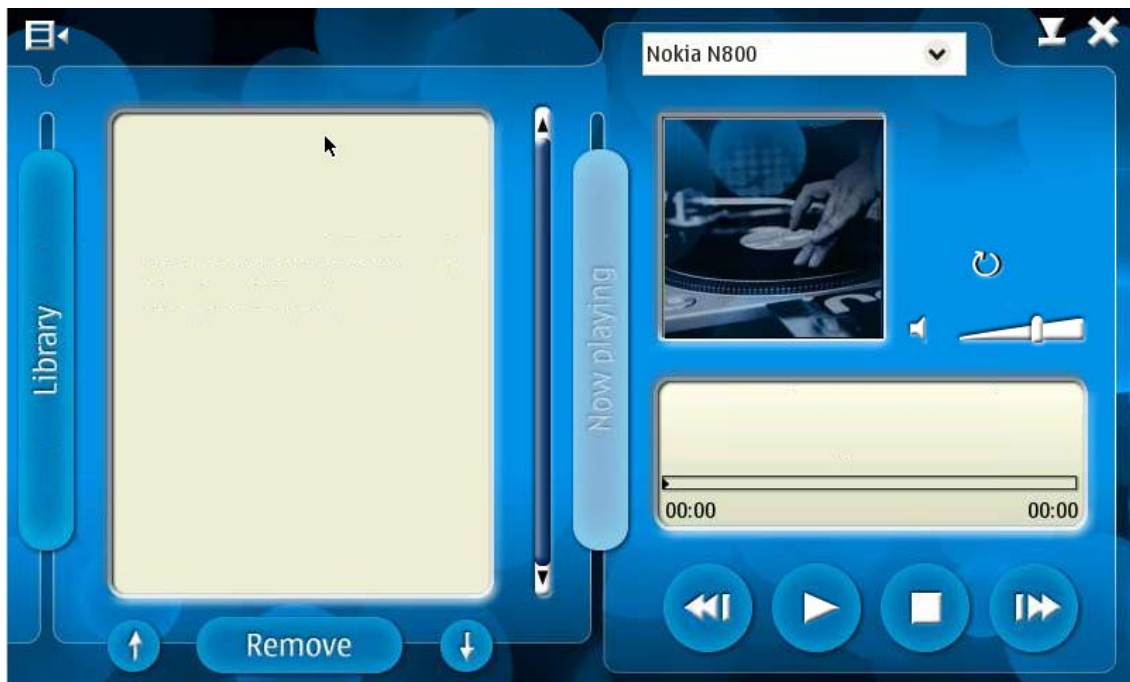
If a Linn GUI playlist exists on the DS, then press the TRACK+ key on the Nokia N800. The Nokia will send the next track on the Nokia playlist to the Linn DS and delete the playlist that existed on the Linn DS.

To prevent communication problems between components, you are advised to use either the Nokia N800 or the Linn GUI software, not both at the same time.

## Volume control of a Linn pre-amplifier

The Nokia N800/N810 can control the volume on Linn pre-amplifiers. The present software (Jan 2008) allows control of the Akurate Kontrol via the Akurate DS, or the Klimax Kontrol via the Klimax DS.

The DS players **must** be setup via the Linn Config utility, to state that a Kontrol pre-amp is connected via RS232.



Volume can be controlled using the slide pointer to the right of the cover art window or the hard +/- buttons at the top right of the Nokia.

**WARNING:** The hard +/- buttons on the top of the Nokia will jump the volume in steps of 10 (65 – 75 – 85 etc.) so be very careful with this control. We advise that a volume limit be set on the Linn Config to stop any accidental damage to ears or equipment.

The slider control allows smaller steps, but because of its small size it is easy to increase the volume too much.



## Troubleshooting

### **Q. The Nokia N800/N810 cannot see the Klimax DS in its playback device box**

A. Early Klimax DS players require a software update to allow them to be seen by the Nokia N800 series. Use the Linn Config software on your PC to check the software version. If the software version is 1.0-0.46, it requires updating to at least 1.0-0.48.

### **Q. The Linn DS will only play one track from the Nokia playlist**

A1. Suspect that the Ethernet idle time is too short. Check the "[Changing Nokia N.... Network settings](#)" section.

A2. If you have more than one Wi-Fi network, the Nokia may have changed wireless networks during DS playback. This means that the Nokia has not received the response from the Linn DS that the present track is almost finished, and the request for the next track. The solution is to only have one valid network connection or change the Nokia-Connectivity-General-Search Interval to "Never".

A3. The Nokia is powered off or the Media Streamer software has shut-down.

### **Q. I cannot see the playlist that I have put on the Linn DS using the Linn GUI software running on the Nokia**

A. The Linn GUI stores the playlist on the Linn DS product. The Nokia N800/N810 stores the playlist in the Nokia and can only be seen by that Nokia itself. The Nokia cannot see the playlist in the Linn DS player.

### **Q. The playlist I have put on the Linn DS using the Linn GUI software has been wiped out**

A. As stated above, the Nokia uses its own internal playlist. When the Linn DS broadcasts via UPnP that the track is almost finished, if the Nokia has an empty playlist it will reply "There's nothing in my playlist", therefore the Linn DS will stop playing.

### **Q. The Nokia cannot see my NAS or Linn DS**

A1. Check that the Nokia is on the same network as the NAS and Linn DS player.

A2. Press the icon on the top left and select "tool" > "Refresh devices". This will force the Media Streamer software to rebroadcast a request for a reply from media servers. Any devices present will appear after a short period of time.

**Q. I've upgraded the firmware and software on my DS system and now the 'next' and 'previous' keys don't work on my N800**

A1. It is likely that the N800 is running OS2007 firmware. It has to be upgraded to OS2008, available on Nokia's website, <http://europe.nokia.com/A4305010>