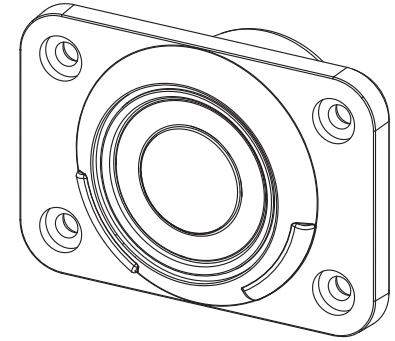




LINN



BERYLLIUM DOME TWEETER

IMPORTANT SAFETY INFORMATION

The outstanding high frequency reproduction from this loudspeaker is made possible through deployment of a beryllium dome tweeter. The diaphragm contains 99% pure beryllium. Beryllium dust is a hazardous material, not to enter the human body, and waste material must be controlled.

Handling solid beryllium poses no significant health risks and if left undisturbed the beryllium tweeter is safe.

It is important that you comply with the following safety precautions:

- Do **NOT** remove the protective grille
- Do **NOT** open or disassemble the tweeter
- If the beryllium dome has been in a fire zone, follow the safety recommendations in the material safety data sheet (https://docs.linn.co.uk/wiki/index.php/360_Beryllium_Safety).

If the tweeter dome is handled aggressively it will likely dent, however should the tweeter dome break small particles of beryllium may be released and if airborne these will pose a health risk.

If your tweeter dome is broken, use double plastic bags, collect loose particles with adhesive tape and put it in the plastic bag. Immediately contact your retailer.

All tweeters requiring repair or service must be returned to the manufacturer to allow safe recycling of the beryllium material – your retailer will handle this for you.

At the end of the speaker's life the beryllium material must be disposed of safely. Take the drive unit to an appropriate recycling or hazardous waste disposal site.

For handling beryllium, always follow the safety recommendations in the material safety data sheet (https://docs.linn.co.uk/wiki/index.php/360_Beryllium_Safety).