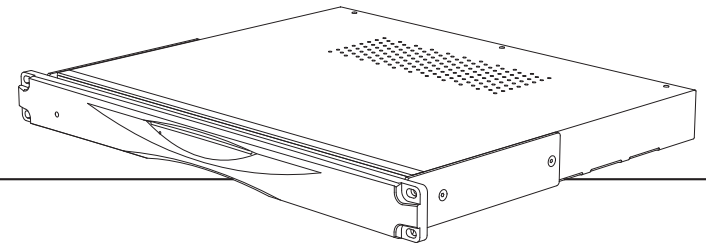




AKURATE MUSIC SERVER



INSTALLATION MANUAL

AKURATE MUSIC SERVER

INSTALLATION MANUAL

SETUP OF THE NAS*

Setup the NAS as per the manufacturer's instructions and as suitable for the network.

In order for the NAS to operate with the Akurate Music Server the following configurations must be done.

1. Network File System (NFS) must be enabled.
2. Add a share called 'Media' (with an uppercase 'm'). Any share called 'media' (lowercase 'm') must be removed.
3. Set all share options for 'Media' (e.g. CIFS, NFS, AFP, HTTP/S) to 'read/write'.

* Detailed instructions on setting up an Infrant ReadyNAS 1100 are provided in the *Set up of the Infrant ReadyNAS 1100* document.

SETUP OF THE AKURATE MUSIC SERVER

Voltage selection

The Akurate Music Server contains an automatic internal mains voltage switch. This switch operates on all worldwide mains voltages from 100 V to 240 V. Manual adjustment on the product for setting the input mains voltage is not possible.



This unit must be earthed. Use the earthed moulded mains lead supplied. Never use an unearthed plug or adaptor.

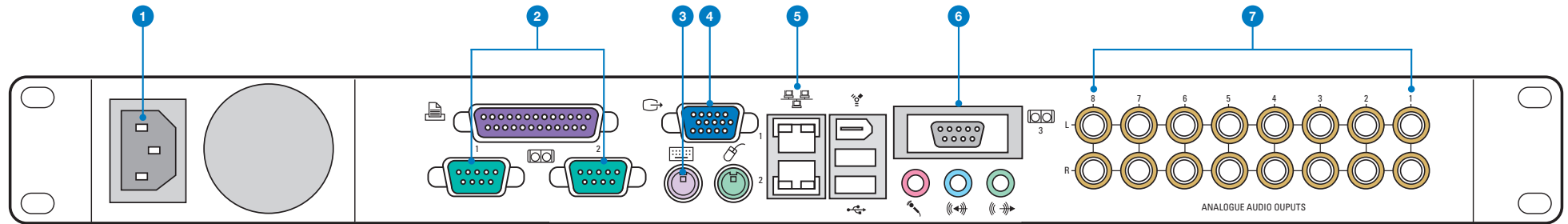
Positioning

The unit has been designed to fit into a 48 cm/19" rack. We recommend you allow 1u above the Akurate Music Server for heat dissipation.

AKURATE MUSIC SERVER

INSTALLATION MANUAL

Connecting - Back panel



1. Mains input

Connect to the mains supply using the mains lead provided

2. Com 1 & 2

For connection to a Linn Kivor Linnk*, PC or third-party control device (see Getting Started guide)

3. Keyboard

For connection to a PS/2 keyboard during setup

4. VGA monitor output

For connection to a monitor during setup

5. Ethernet

For connection to an Ethernet network (port 1 only, port 2 is not used)

6. Com 3 (modem)

For connection to an external dial-up modem

7. Analogue out

Eight pairs of line outputs for connection to a Linn Knekt Intersekt* or other pre-amplifier

* If you wish to use your Akurate Music Server in a Linn Knekt system, the unit must be connected to a Linn Kivor Linnk.



The Akurate Music Server should be disconnected from the mains supply before connecting or disconnecting any of the plugs on the back panel. If this is not done you may generate surges which could damage the Akurate Music Server or other components in your multi-room or hi-fi system.

Important note:

If the Akurate Music Server has been powered off, it must be connected to a live network on which the NAS is on and booted-up, before it is powered back on, otherwise it will not boot-up correctly.

AKURATE MUSIC SERVER

INSTALLATION MANUAL

Power button

In the event that the unit does not power up when connected to the mains supply, use a pin, straightened paper-clip or a similar implement to press the power button, which is located behind the hole in the left-hand side of the fascia.

Installing the software

The CD ROM included with the Akurate Music Server contains the Linntek Setup and Control Utility for operating the unit via a PC. The CD ROM also includes the owner's manual for the product in PDF format.

To load the software and view the owner's manual, you will require:

PC with CD ROM reading ability, Windows® 95 or above, Acrobat® Reader® software.

To install the software and PDFs onto a PC:

Copy all of the files on the CD ROM into a directory on the computer, e.g. 'c:\program files\AMS'.

Double-click the Linntek.exe icon and the application will run. The default setting is for Com 1 (the coms port can be changed in the Settings screen on the utility).

If you have Acrobat® Reader® software installed on the PC, double click the icon for the required owner's manual. Acrobat® Reader® software is available for free download from www.adobe.com

Installing the Akurate Music Server

1. With the Akurate Music Server turned off, connect it via a hub/router to the installation PC* and the NAS.
2. Turn the hub/router, PC and NAS on.
3. Wait until the NAS has finished booting-up, then connect the Akurate Music Server to a monitor and keyboard.
4. Turn the Akurate Music Server and monitor on.
5. After the Akurate Music Server has completed its boot-up (it will take approx. 5 minutes), press 'Alt+F2' to open the log-in screen.
6. Enter 'root' for the username, and 'aap' for the password.
7. Type 'r4' then hit the tab key. The command line will change to 'r4nas-setup'. Hit 'enter' to open the Network Settings screen.
8. Press '0' (zero).
9. For 'Port 0 DHCP? (y/n/d)' press 'n' then hit 'enter'.
10. For 'Port 0 IP address' enter the IP address of the Akurate Music Server. Hit 'enter'.
11. For 'Port 0 IP network mask' enter '255.255.0.0'. Hit 'enter'.
12. For 'Port 0 IP gateway' enter a suitable address for accessing the Internet via the router (usually this will be the router's IP address). AN ADDRESS **MUST** BE ENTERED, even if no gateway exists. Hit 'enter'.

AKURATE MUSIC SERVER

INSTALLATION MANUAL

13. Press '1'. Enter the IP address of the NAS.
14. Press 's' to save the data.
15. Press 'q' to quit.
16. The Akurate Music Server will reboot. This will take a few minutes. During this time install the Linntek Setup and Control utility on the PC, if you have not already done so.

Setup for control via Ethernet

17. Start the Linntek utility.
18. Right-click on the Linntek's title bar and choose 'Settings' from the menus. Select 'Ethernet' and enter the IP address of the Akurate Music Server. Select 'OK', close Linntek and restart it.
19. The Akurate Music Server can now be controlled via Linntek.

Setup for control via serial port

The Akurate Music Server is factory configured with Com 1 as the default communication port, therefore if you have connected the PC to Com 1 you will be able to use Linntek to control the unit without making any changes. However, if you wish to use Com 2 on the Akurate Music Server, do the following:

Right-click on the Linntek's title bar and choose 'Settings' from the menus. Select 'COM 2' and enter the IP address of the Akurate Music Server. Select 'OK', close Linntek and restart it.

* If you wish to connect the Akurate Music Server to the installation PC via serial port, use a suitable length of nine-way to nine-way null modem cable or standard nine-way to nine-way cable with the following pin configuration:

Connect plug 1 pin 5 to plug 2 pin 5
Connect plug 1 pin 2 to plug 2 pin 3
Connect plug 1 pin 3 to plug 2 pin 2
Connect plug 1 pin 7 to plug 2 pin 8
Connect plug 1 pin 8 to plug 2 pin 7
Connect plug 1 pin 4 to plug 2 pin 6
Connect plug 1 pin 6 to plug 2 pin 4

AKURATE MUSIC SERVER

INSTALLATION MANUAL

Accessing the Look-up Service

The Gracenote CDDB Music Recognition ServiceSM is an online database that contains artist, album and track title information for millions of CDs. If the Akurate Music Server is configured to connect to an Internet Service Provider*, or uses an Ethernet connection, it can access the Gracenote CDDB Service. Artist, album and track title information will be shown in the Linntek Control Utility database panel.

Ethernet (Broadband/ADSL) connection

To configure the Akurate Music Server to access the Gracenote CDDB Service via an Ethernet connection:

- Right-click on the blue bar at the top of the Linntek Control Utility screen.
- Click **Configuration**.
- Select the **Connection Type** tab.
- Select the **Ethernet** option.
- Select the **Ethernet Settings** tab.
- Select the desired mode and enter the necessary Internet settings.
- Click **OK**.

If you are using an Ethernet connection the Akurate Music Server can be further configured to automatically access the Gracenote CDDB Service when a disc is inserted.

To do this:

- Right-click on the blue bar at the top of the Linntek Control Utility screen.
- Click **Settings**.
- Check the **Automatically look up disc information** checkbox.
- Click **OK**.

AKURATE MUSIC SERVER

INSTALLATION MANUAL

Modem connection

To configure the Akurate Music Server to access the Gracenote CDDB Service via an external modem:

- Install the modem as per the documentation supplied by the manufacturer.
- Right-click on the blue bar at the top of the Linntek Control Utility screen.
- Click **Configuration**.
- Select the **Connection Type** tab.
- Select the **Modem** option.
- Select the **Account Settings** tab.
- Enter the telephone number used to connect to the Internet Service Provider.
- Enter the user name and password used to log-on to the Internet Service Provider.
- Click **OK**.

* The Internet Service Provider must accept dial-up networking connections.

Note:

The Akurate Music Server has been factory configured for connection by external dial-up modem to UK-ONLINE, should you wish to use their service (the pre-configured telephone number, user name and password are not shown). Entering information for a preferred Internet Service Provider will overwrite the factory configuration.

The content of this document is furnished for information only, is subject to change without notice, and should not be construed as a commitment by Linn Products Limited. Linn Products Limited assumes no responsibility or liability for any errors or inaccuracies that may appear in this manual.

September 2007. Copyright © Linn Products Limited.